



# BEAUFORT COUNTY AIRPORTS BOARD

Reports and Charts  
October 2025

## ARW FUEL OPS

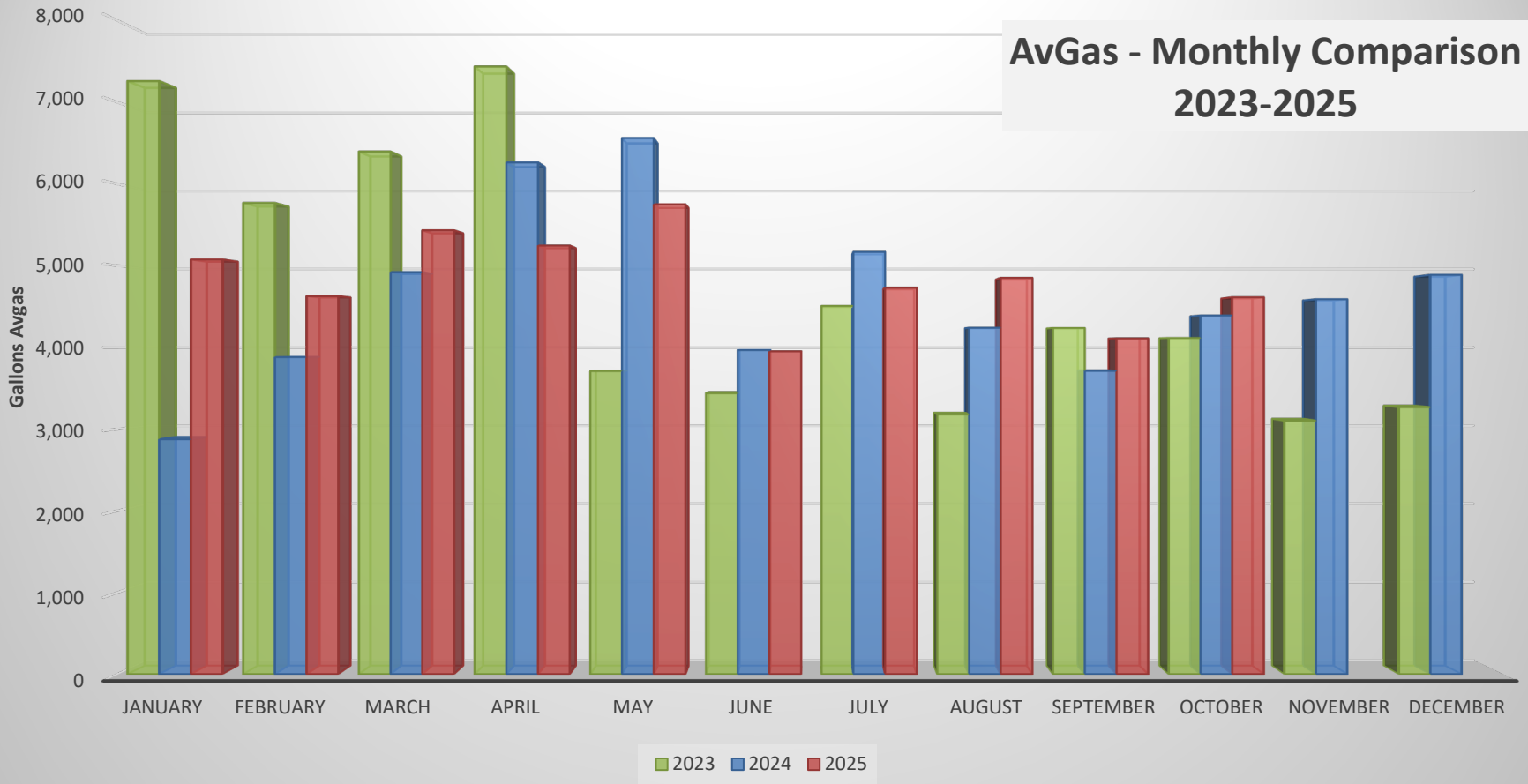
	AvGas	Jet A	Total Flow
<b>2025</b>			
January	5,076	6,186	11,262
February	4,627	6,641	11,268
March	5,432	10,495	15,927
April	5,245	6,147	11,392
May	5,750	7,658	13,408
June	3,951	4,317	8,268
July	4,729	4,843	9,572
August	4,851	7,285	12,136
September	4,111	5,815	9,926
<b>October</b>	4,613	9,633	14,246
November			
December			
<b>TOTAL</b>	<b>48,385</b>	<b>69,020</b>	<b>117,405</b>

	AvGas	Jet A	Total Flow
<b>2024</b>			
January	2,876	6,889	9,765
February	3,881	6,398	10,279
March	4,922	7,460	12,382
April	6,263	7,385	13,648
May	6,561	8,975	15,536
June	3,967	6,013	9,980
July	5,168	5,505	10,673
August	4,240	5,443	9,683
September	3,713	6,308	10,021
October	4,390	8,017	12,407
November	4,589	8,146	12,735
December	4,887	7,906	12,793
<b>TOTAL</b>	<b>55,457</b>	<b>84,445</b>	<b>139,902</b>

	AvGas	Jet A	Total Flow
<b>2023</b>			
January	7,257	6,023	13,280
February	5,767	4,174	9,941
March	6,396	6,798	13,194
April	7,436	5,793	13,229
May	3,710	9,607	13,317
June	3,439	5,510	8,949
July	4,507	3,861	8,368
August	3,180	3,412	6,592
September	4,237	6,845	11,082
October	4,115	8,657	12,772
November	3,104	7,368	10,472
December	3,269	7,954	11,223
<b>TOTAL</b>	<b>56,417</b>	<b>76,002</b>	<b>132,419</b>

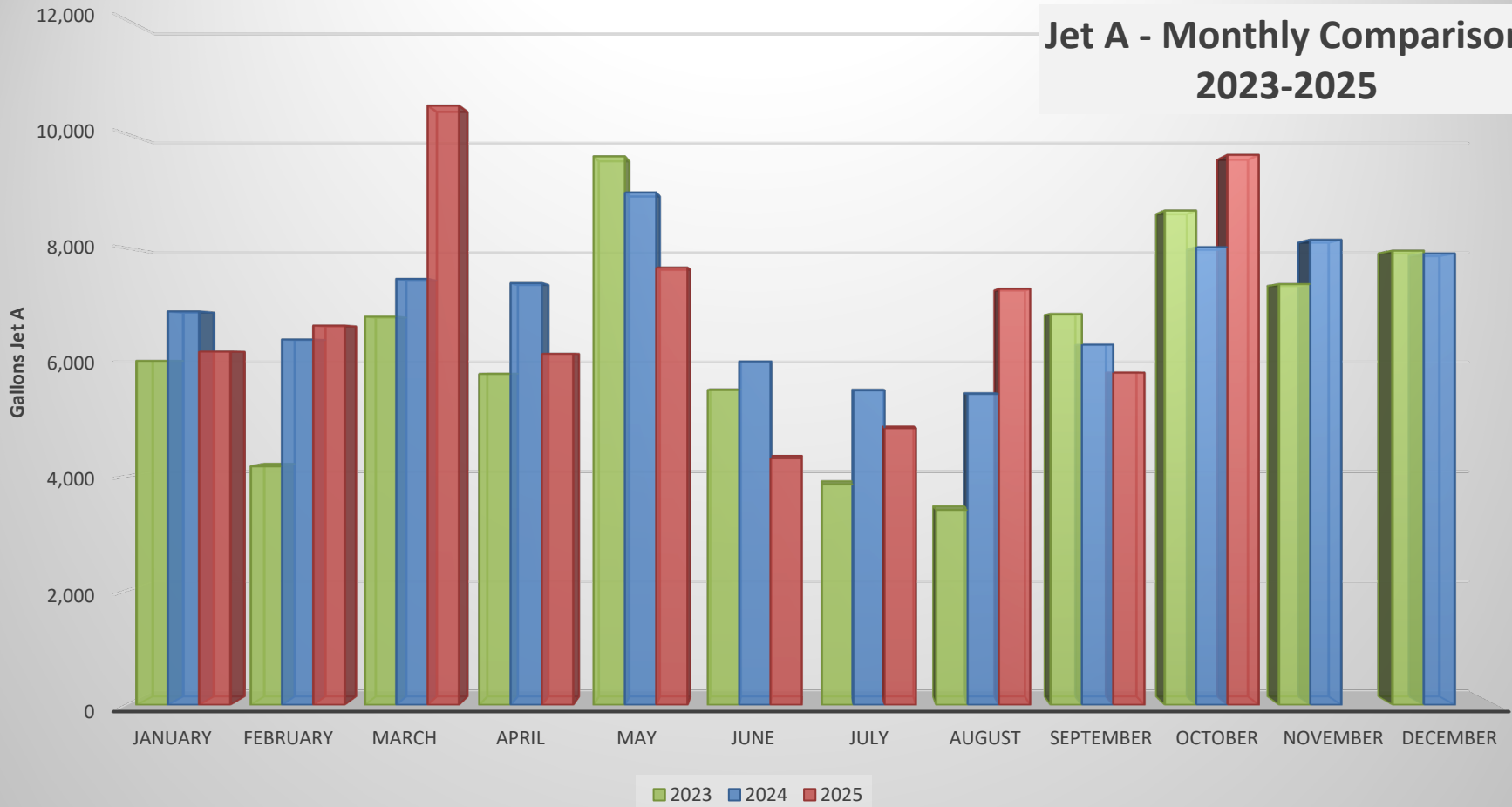
# ARW FUEL

AvGas - Monthly Comparison  
2023-2025

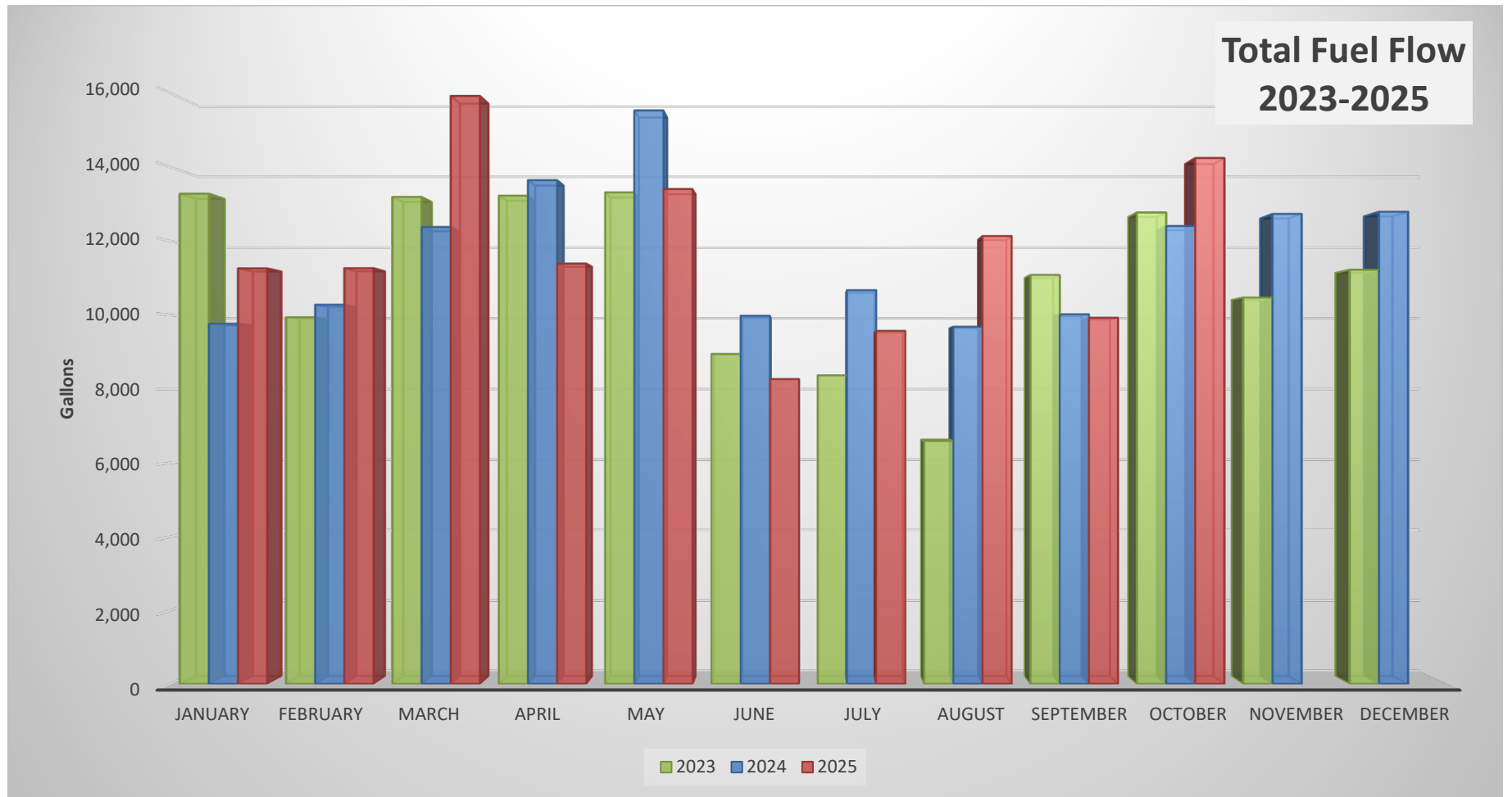


# ARW FUEL

Jet A - Monthly Comparison  
2023-2025



# ARW FUEL



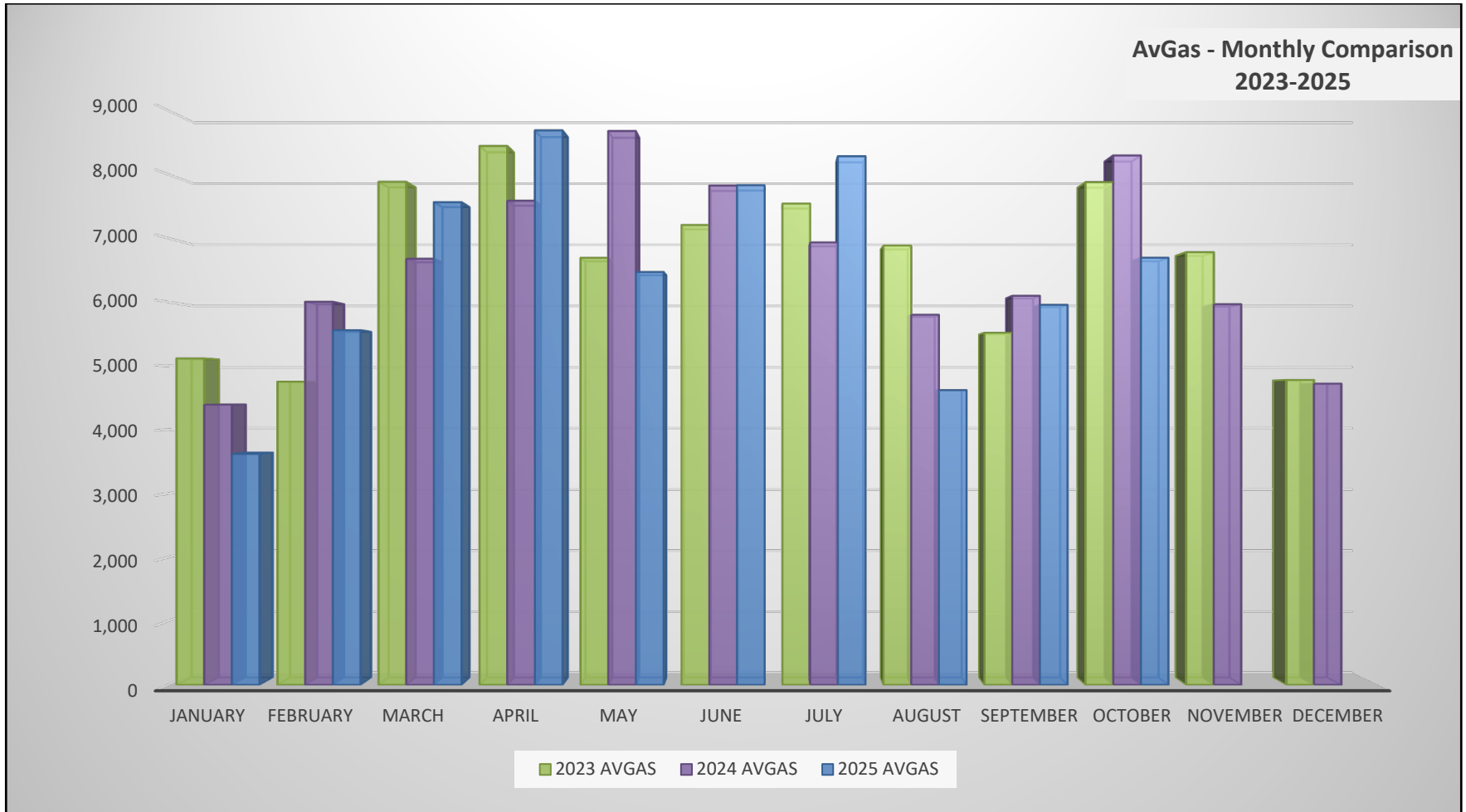
## HXD FUEL OPS

	AvGas	Jet A	Comm	Total Flow
<b>2025</b>				
JAN	3,620	71,249	21,302	96,171
FEB	5,558	68,979	22,736	97,273
MAR	7,561	140,066	64,955	212,582
APR	8,685	184,634	138,344	331,663
MAY	6,468	137,342	158,902	302,712
JUN	7,827	130,926	205,346	344,099
JUL	8,280	120,661	187,225	316,166
AUG	4,619	89,799	174,892	269,310
SEP	5,954	90,905	128,021	224,880
<b>OCT</b>	6,691	133,199	136,186	276,076
NOV				
DEC				
<b>TOTAL</b>	<b>65,263</b>	<b>1,167,760</b>	<b>1,237,909</b>	<b>2,470,932</b>

	AvGas	Jet A	Comm	Total Flow
<b>2024</b>				
JAN	4,392	63,675	24,388	92,455
FEB	6,002	74,379	37,414	117,795
MAR	6,675	111,232	52,935	170,842
APR	7,584	186,464	125,004	319,052
MAY	8,675	133,750	177,459	319,884
JUN	7,821	111,660	168,194	287,675
JUL	6,931	98,605	170,219	275,755
AUG	5,799	85,483	150,217	241,499
SEP	6,095	90,691	119,363	216,149
OCT	8,292	134,264	105,182	247,738
NOV	5,963	141,441	37,302	184,706
DEC	4,721	86,200	31,077	121,998
<b>TOTAL</b>	<b>78,950</b>	<b>1,317,844</b>	<b>1,198,754</b>	<b>2,595,548</b>

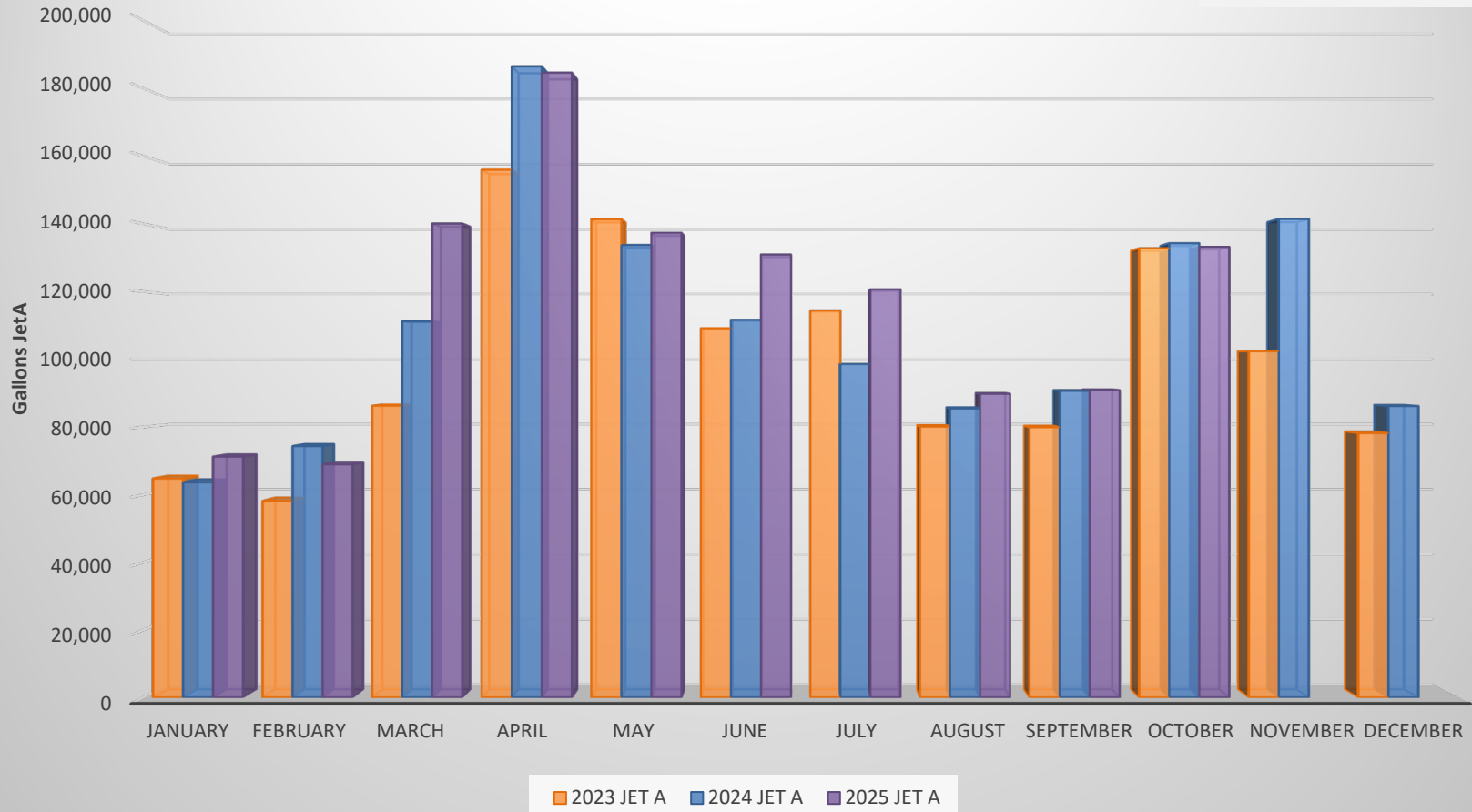
	AvGas	Jet A	Comm	Total Flow
<b>2023</b>				
JAN	5,115	64,794	22,074	91,983
FEB	4,752	58,153	22,411	85,316
MAR	7,879	86,292	57,518	151,689
APR	8,441	155,968	120,950	285,359
MAY	6,690	141,342	158,062	306,094
JUN	7,204	109,180	156,555	272,939
JUL	7,539	114,406	176,615	298,560
AUG	6,882	80,121	142,980	229,983
SEP	5,516	79,931	129,626	215,073
OCT	7,874	132,783	105,108	245,765
NOV	6,778	102,381	30,600	139,759
DEC	4,778	78,201	18,130	101,109
<b>TOTAL</b>	<b>79,448</b>	<b>1,203,552</b>	<b>1,140,629</b>	<b>2,423,629</b>

# HXD FUEL



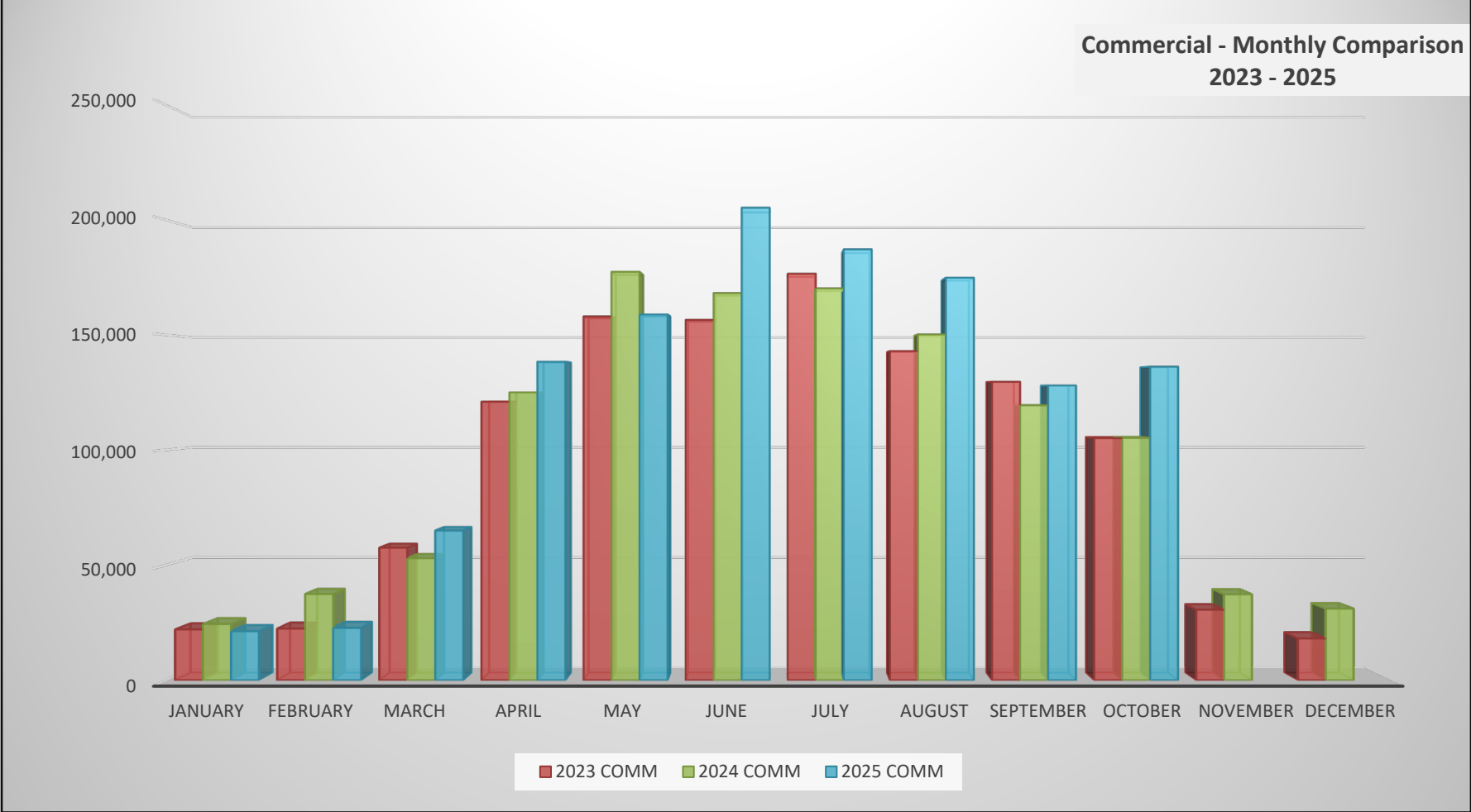
# HXD FUEL

Jet A - Monthly Comparison  
2023 - 2025

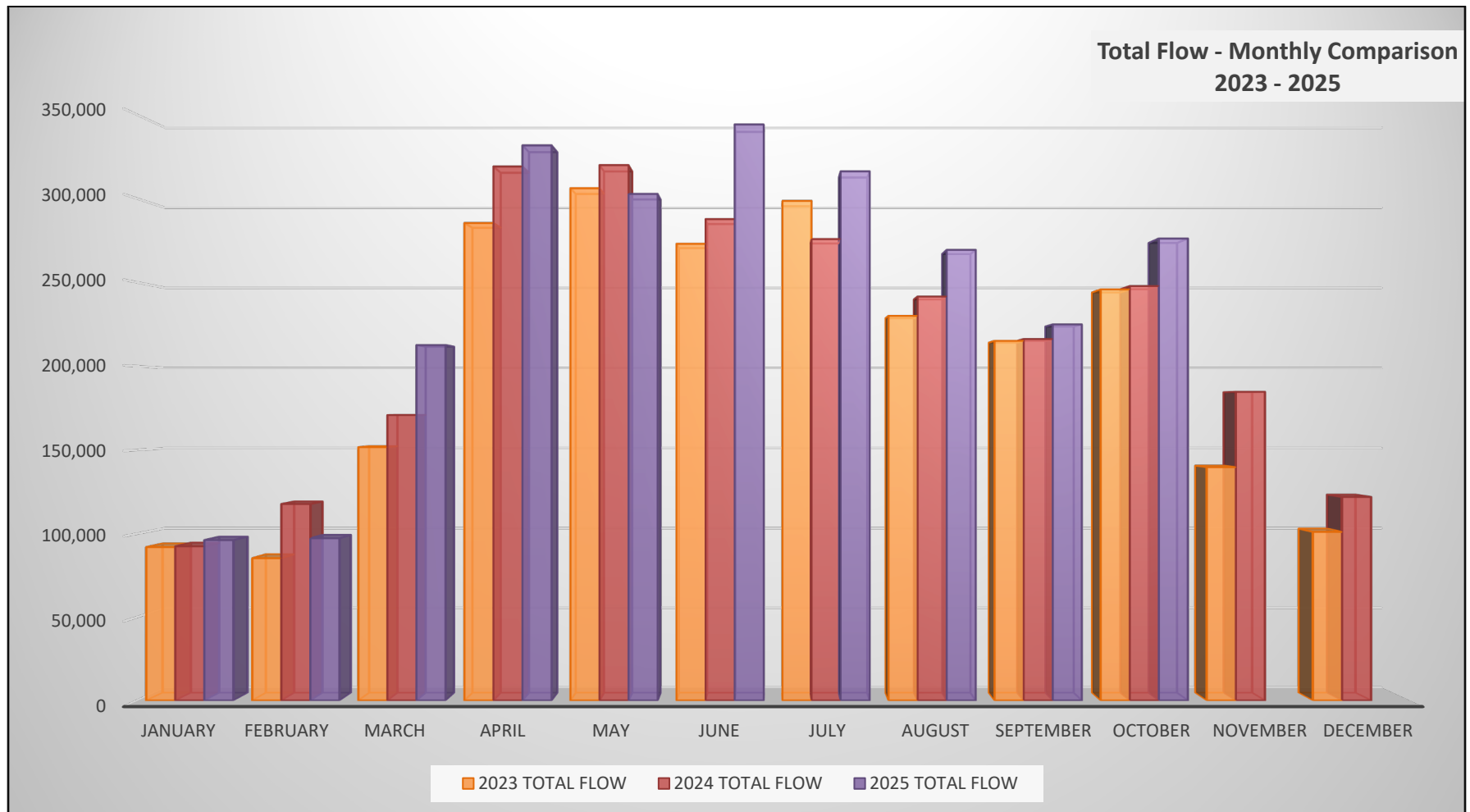




# HXD FUEL

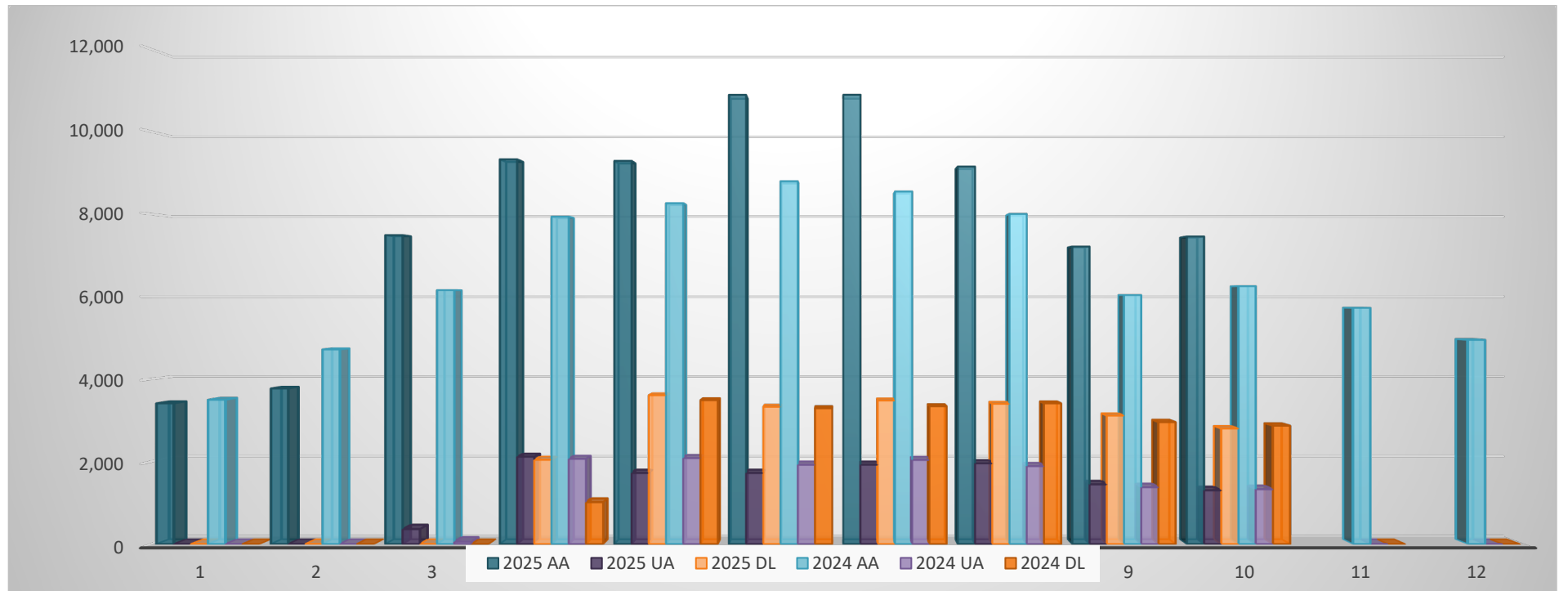


# HXD FUEL



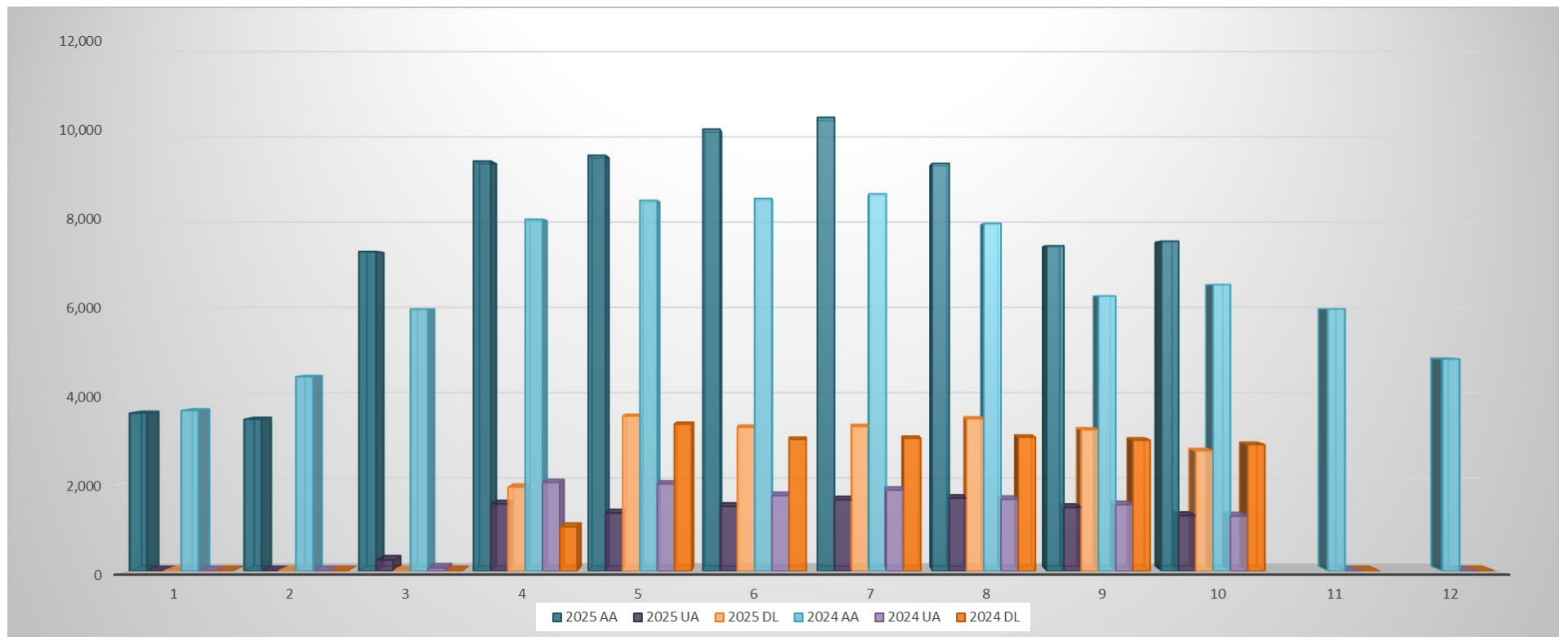
## HXD PASSENGER DEPLANEMENTS (arrivals) 2024-2025

Year	2024	2024	2024	2024 Total	2024 YTD Total	2025	2025	2025	2025 Total	2025 YTD Total
Airlines	AA	UA	DL			AA	UA	DL		
JAN	3,498	0	0	3,498	3,498	3,412	0	0	3,412	3,412
FEB	4,718	0	0	4,718	8,216	3,772	0	0	3,772	7,184
MAR	6,154	59	0	6,213	14,429	7,488	365	0	7,853	15,037
APR	7,939	2,068	1,017	11,024	25,453	9,326	2,120	2,045	13,491	28,528
MAY	8,263	2,086	3,489	13,838	39,291	9,288	1,725	3,608	14,621	43,149
JUN	8,795	1,925	3,292	14,012	53,303	10,888	1,725	3,329	15,942	59,091
JUL	8,545	2,042	3,342	13,929	67,232	10,717	1,926	3,482	16,125	75,216
AUG	8,002	1,891	3,411	13,304	80,536	9,150	1,959	3,400	14,509	89,898
SEP	6,035	1,380	2,957	10,372	90,908	7,211	1,449	3,115	11,775	101,673
<b>OCT</b>	6,251	1,331	2,871	10,453	101,361	7,455	1,305	2,803	11,563	<b>113,236</b>
NOV	5,724	0	0	5,724	107,085					
DEC	4,950	0	0	4,950	<b>112,039</b>					
<b>TOTALS</b>	<b>78,874</b>	<b>12,782</b>	<b>20,379</b>	<b>112,035</b>		78,880	12,574	21,782	<b>113,236</b>	



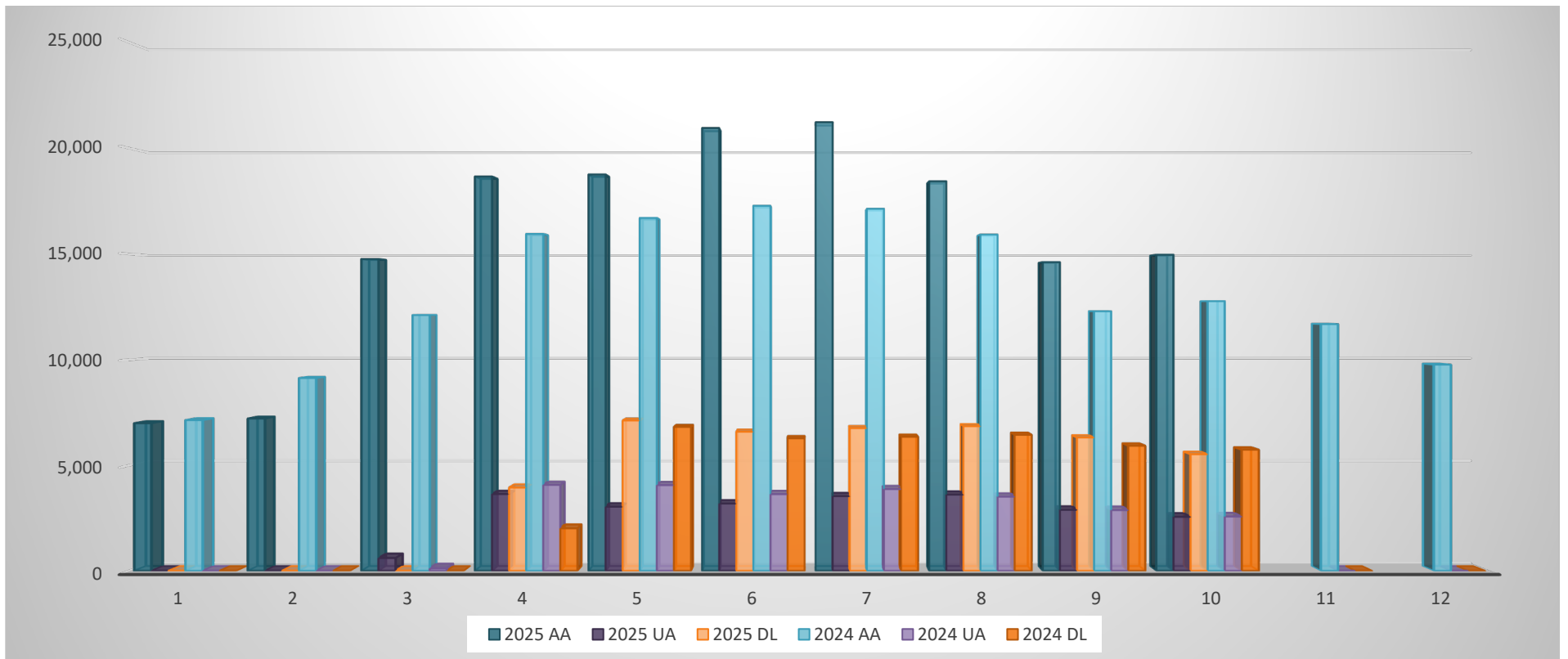
## HXD PASSENGER ENPLANEMENTS (departures) 2024-2025

Year	2024	2024	2024	2024 Total	2024	2025	2025	2025	2025 Total	2025 YTD Total
Airlines	AA	UA	DL		YTD Total	AA	UA	DL		
JAN	3,651	0	0	3,651	3,651	3,593	0	0	3,593	3,593
FEB	4,423	0	0	4,423	8,074	3,453	0	0	3,453	7,046
MAR	5,962	64	0	6,026	14,100	7,273	248	0	7,521	14,567
APR	8,007	2,014	1,005	11,026	25,126	9,330	1,527	1,908	12,765	27,332
MAY	8,437	1,983	3,340	13,760	38,886	9,464	1,320	3,525	14,309	41,641
JUN	8,480	1,716	2,996	13,192	52,078	10,058	1,470	3,271	14,799	56,440
JUL	8,586	1,840	3,018	13,444	65,522	10,197	1,619	3,289	15,105	71,545
AUG	7,913	1,630	3,043	12,586	78,108	9,280	1,659	3,463	14,402	86,077
SEP	6,260	1,506	2,978	10,744	88,852	7,404	1,447	3,212	12,063	98,140
<b>OCT</b>	6,521	1,248	2,877	10,646	99,498	7,508	1,261	2,731	11,500	<b>109,640</b>
NOV	5,965	0	0	5,965	105,463					
DEC	4,824	0	0	4,824	<b>110,287</b>					
<b>TOTALS</b>	<b>79,029</b>	<b>12,001</b>	<b>19,257</b>	<b>110,287</b>		<b>77,690</b>	<b>10,551</b>	<b>21,399</b>	<b>109,640</b>	



## HXD TOTAL PASSENGER DEPLANEMENTS & ENPLANEMENTS 2024-2025

Year	2024	2024	2024	2024 Total	2024 YTD Total	2025	2025	2025	2025 Total	2025 YTD Total
Airlines	AA	UA	DL			AA	UA	DL		
JAN	7,149	0	0	7,149	7,149	7,005	0	0	7,005	7,005
FEB	9,141	0	0	9,141	16,290	7,225	0	0	7,225	14,230
MAR	12,116	123	0	12,239	28,529	14,761	613	0	15,374	29,604
APR	15,946	4,082	2,022	22,050	50,579	18,656	3,647	3,953	26,256	55,860
MAY	16,700	4,069	6,829	27,598	78,177	18,752	3,045	7,133	28,930	84,790
JUN	17,275	3,641	6,288	27,204	105,381	20,946	3,195	6,600	30,741	115,531
JUL	17,131	3,882	6,360	27,373	132,754	20,914	3,545	6,771	31,230	146,761
AUG	15,915	3,521	6,454	25,890	158,644	18,430	3,618	6,863	28,911	175,975
SEP	12,295	2,886	5,935	21,116	179,760	14,615	2,896	6,327	23,838	199,813
<b>OCT</b>	12,772	2,579	5,748	21,099	200,859	14,963	2,566	5,534	23,063	<b>222,876</b>
NOV	11,689	0	0	11,689	212,548					
DEC	9,774	0	0	9,778	<b>222,326</b>					
<b>TOTALS</b>	<b>157,903</b>	<b>24,783</b>	<b>39,636</b>	<b>222,326</b>		156,570	23,125	43,181	<b>222,876</b>	

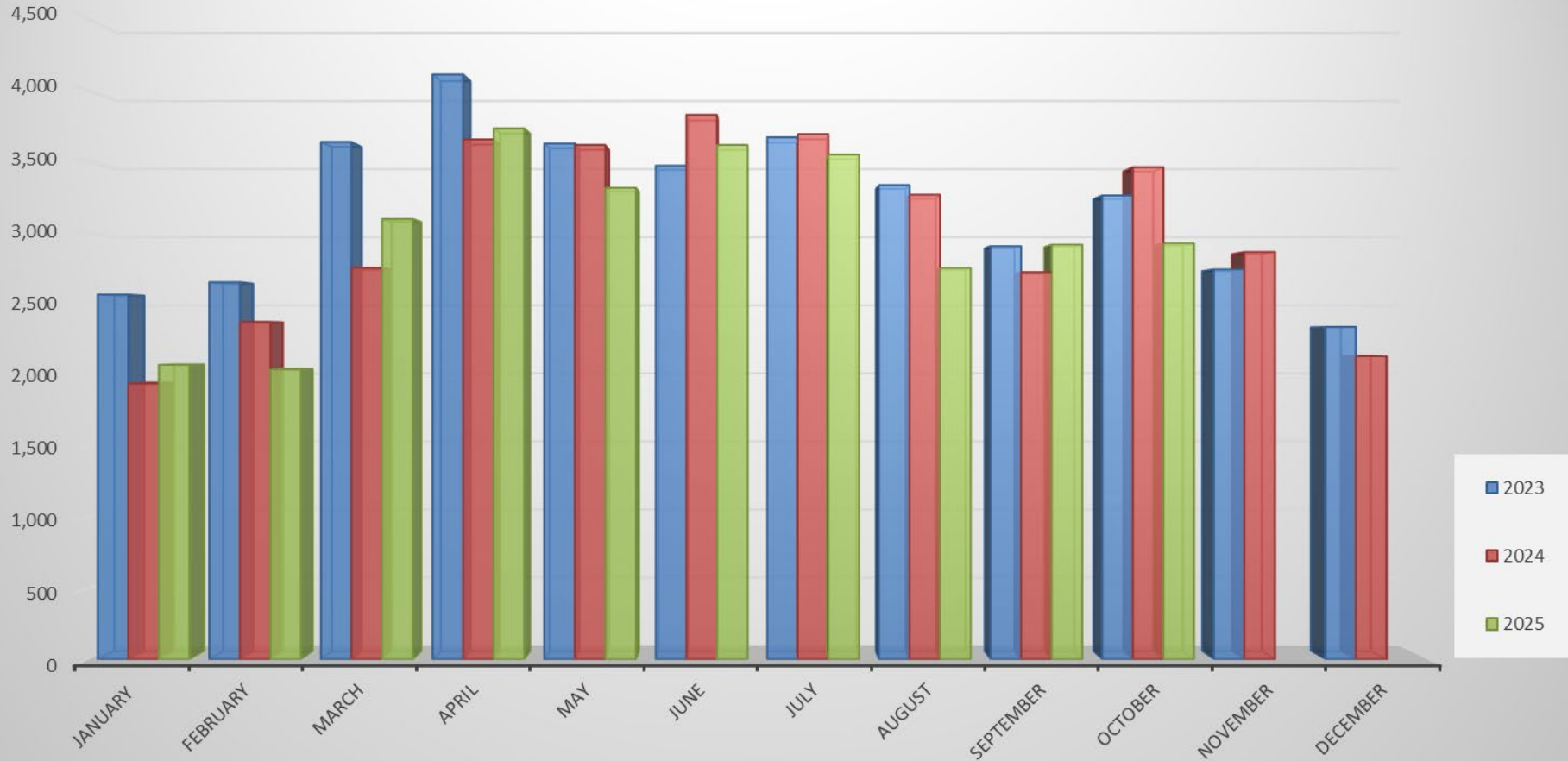


# Tower Report

2025	AIR COMM	AIR TAXI	COMBINED COMM	GA	MILITARY	LOCAL GA	LOCAL MIL	VFR	IFR	Total Ops	YTD Total Ops
January	119	447	566	1221	37	170	76	1075	995	2,070	2,070
February	111	478	589	1,243	54	106	46	930	1,108	2,038	4,108
March	238	891	1,129	1,804	41	88	34	1,299	1,797	3,096	7,204
April	431	1157	1,588	1,938	39	132	36	1,373	2,360	3,733	10,937
May	500	924	1,424	1,713	32	106	40	1,262	2,053	3,315	14,252
June	557	1,034	1,591	1,843	22	146	14	1,449	2,167	3,616	17,868
July	545	1,179	1,724	1,623	27	134	40	1,538	2,010	3,548	21,416
August	522	675	1197	1403	24	101	26	996	1755	2751	24,167
September	440	792	1,232	1,514	23	120	26	1,272	1,643	2,915	27,082
October	411	772	1,183	1,573	31	114	24	945	1,980	2,925	30,007
November											
December											
<b>TOTAL</b>	<b>3,874</b>	<b>8,349</b>	<b>12,223</b>	<b>15,875</b>	<b>330</b>	<b>1,217</b>	<b>362</b>	<b>12,139</b>	<b>17,868</b>	<b>30,007</b>	
2024	AIR COMM	AIR TAXI	COMBINED COMM	GA	MILITARY	LOCAL GA	LOCAL MIL	VFR	IFR	Total Ops	YTD Total Ops
January	113	325	438	1,368	20	98	14	980	958	1,938	1,938
February	141	401	542	1,618	19	132	62	1,214	1,159	2,373	4,311
March	184	565	749	1,837	29	114	16	1,290	1,464	2,754	7,065
April	346	787	1,133	2,370	28	66	58	1,514	2,141	3,655	10,720
May	455	902	1,357	2,120	17	80	42	1,563	2,053	3,616	14,336
June	467	1,308	1,775	1,947	28	66	12	1,953	1,875	3,828	18,164
July	470	1,347	1,817	1,627	35	193	20	2,034	1,658	3,692	21,856
August	451	1,107	1,558	1,532	30	144	2	1,652	1,614	3,266	25,122
September	375	724	1,099	1,446	38	100	40	1,162	1,561	2,723	27,845
October	341	969	1,310	1,944	37	111	58	1,451	2,009	3,460	31,305
November	172	829	1001	1708	23	94	38	1,172	1,692	2,864	34,169
December	152	526	678	1,319	36	74	24	894	1,237	2,131	36,300
<b>TOTAL</b>	<b>3,667</b>	<b>9,790</b>	<b>13,457</b>	<b>20,836</b>	<b>340</b>	<b>1,272</b>	<b>386</b>	<b>16,879</b>	<b>19,421</b>	<b>36,300</b>	
2023	AIR COMM	AIR TAXI	COMBINED COMM	GA	MILITARY	LOCAL GA	LOCAL MIL	VFR	IFR	Total Ops	YTD Total Ops
January	125	298	423	1,568	56	306	132	1,557	1,008	2,565	2,565
February	114	319	433	1,782	45	328	64	1,533	1,119	2,652	5,217
March	182	479	661	2,512	52	364	48	2,109	1,528	3,637	8,854
April	324	777	1,101	2,657	28	292	34	1,937	2,175	4,112	12,966
May	455	611	1,066	2,271	26	226	38	1,521	2,106	3,627	16,593
June	458	504	962	2,306	15	168	20	1,607	1,864	3,471	20,064
July	512	555	1,067	2,410	9	155	28	1,826	1,843	3,669	23,733
August	440	375	815	2,238	23	226	32	1,763	1,571	3,334	27,067
September	395	390	785	1,960	11	119	30	1,346	1,559	2,905	29,972
October	319	684	1,003	2,092	26	98	42	1,328	1,933	3,261	33,233
November	130	517	647	1,902	31	136	26	1,245	1,497	2,742	35,975
December	116	420	536	1,598	28	137	38	1,244	1,093	2,337	38,312
<b>TOTAL</b>	<b>3,570</b>	<b>5,929</b>	<b>9,499</b>	<b>25,296</b>	<b>350</b>	<b>2,555</b>	<b>532</b>	<b>19,016</b>	<b>19,296</b>	<b>38,312</b>	

# HDX TOWER REPORT

## HXD Tower Operation 2023 - 2025

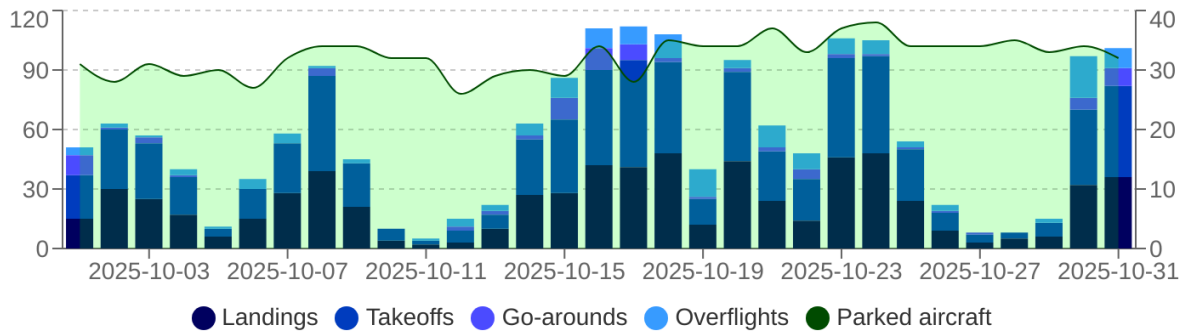


## Beaufort Executive Airport | Runway Operations Report

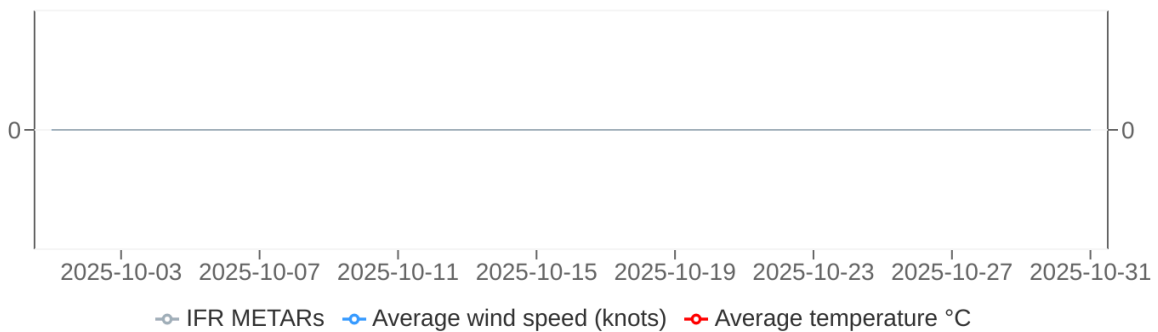
Report Date Range: 10/2025  
 Report creation date: 11/03/2025 10:47  
 Generated by: brandon.chavis@bcgov.net

Total Operations	Landings	Takeoffs	Go-Arounds	Overflights
<b>1,745</b>	<b>704</b>	<b>783</b>	<b>88</b>	<b>170</b>

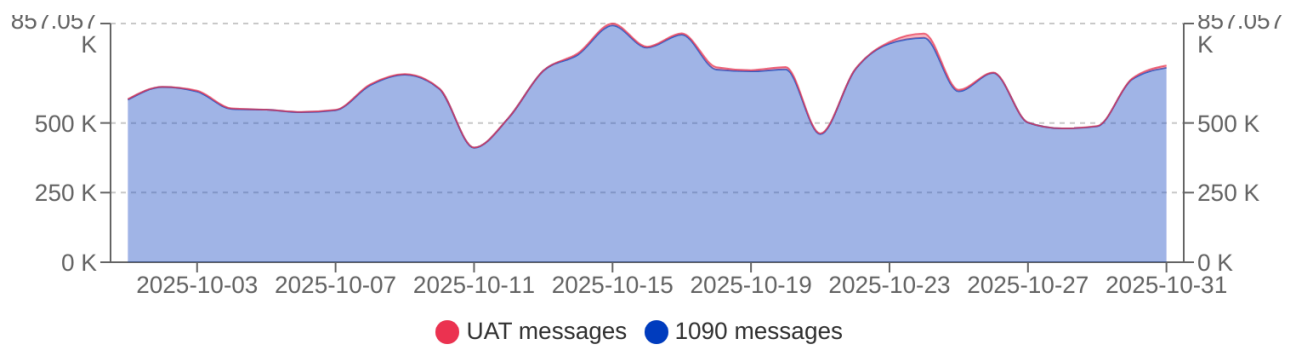
### Operations by Day



### Weather Conditions



### Receiver health

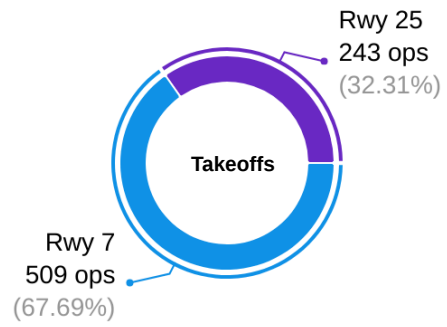
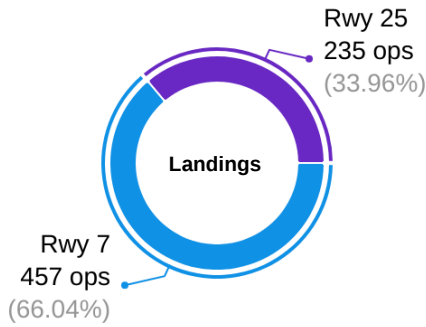




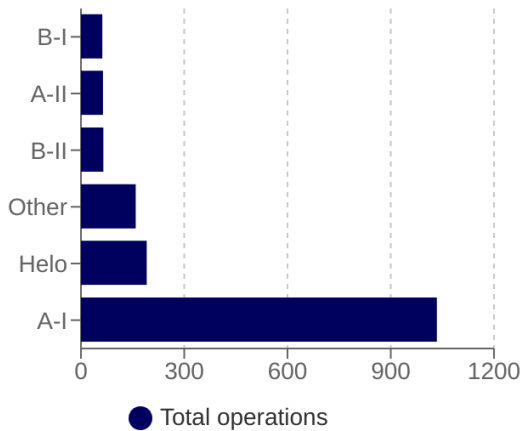
## Beaufort Executive Airport | Runway Operations Report

Report Date Range: 10/2025

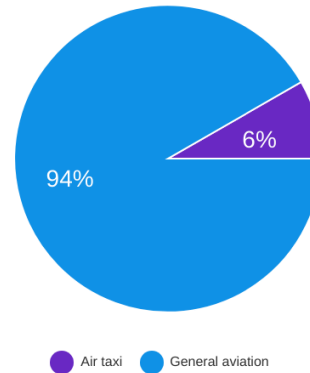
### Operations by Runway



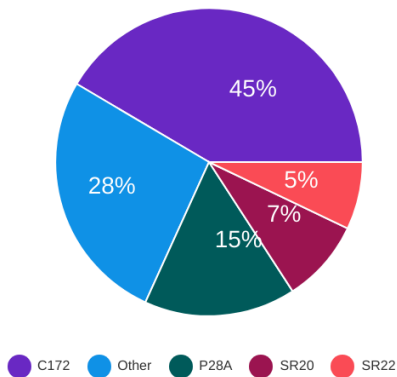
### Operations by Category



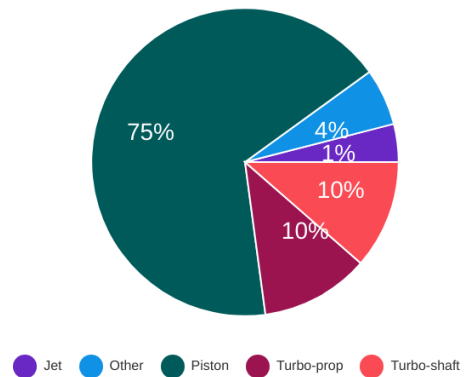
### Operations by Type



### Top Aircraft Types



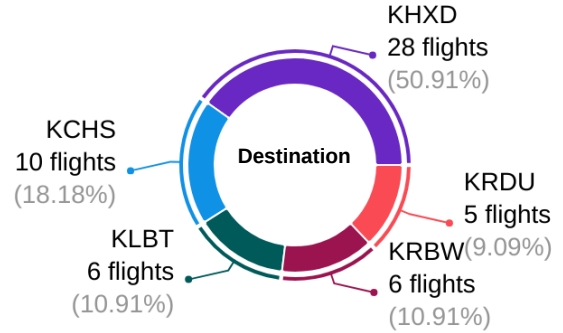
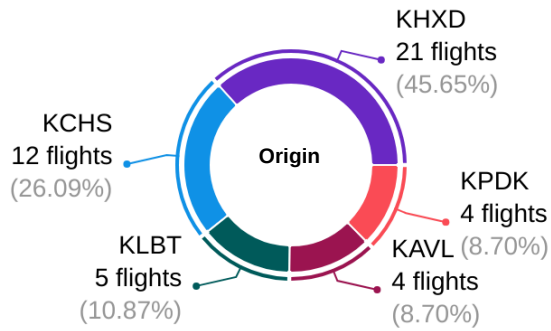
### Operations by Engine Type



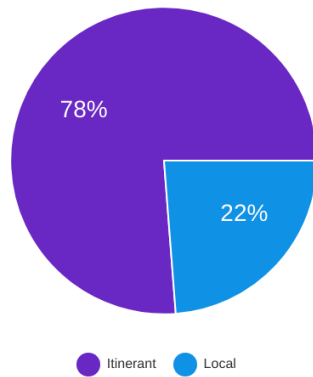
## Beaufort Executive Airport | Runway Operations Report

Report Date Range: 10/2025

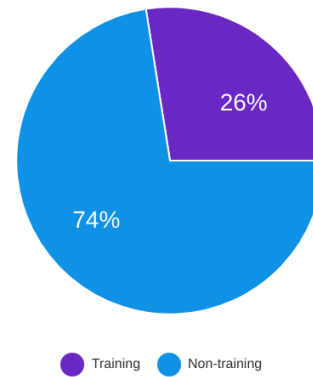
### Top Airports



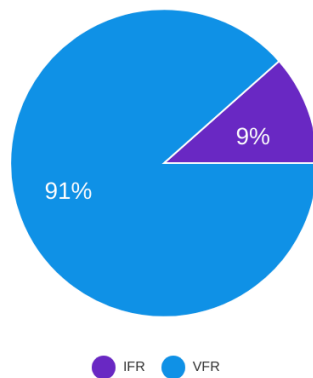
### Local vs Itinerant Flights



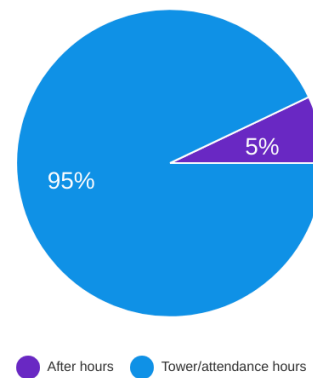
### Training Operations



### IFR vs VFR Flights



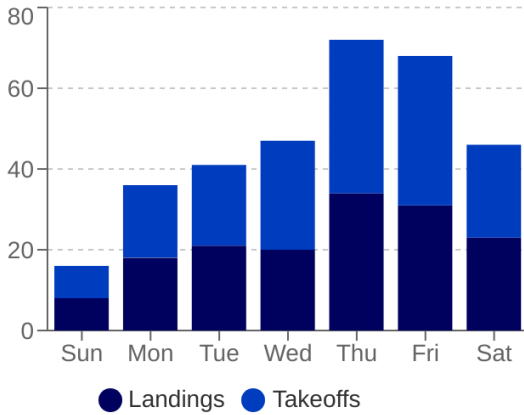
### After Hours Operations



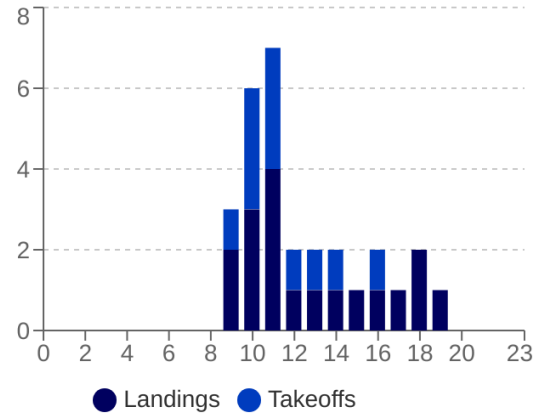
## Beaufort Executive Airport | Runway Operations Report

Report Date Range: 10/2025

### Operations by Day of Week

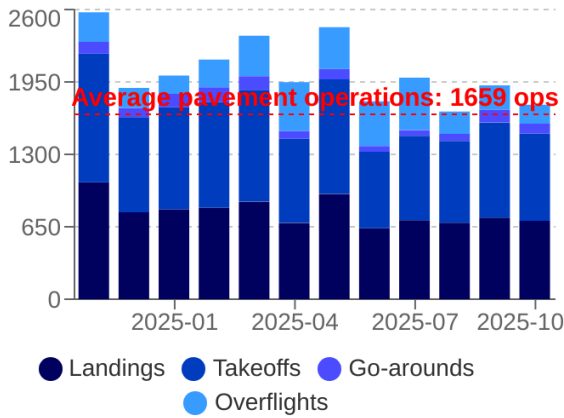


### Operations by Hour



## Historical Data

### Landings and Takeoff By Month



### Busiest Days on Record

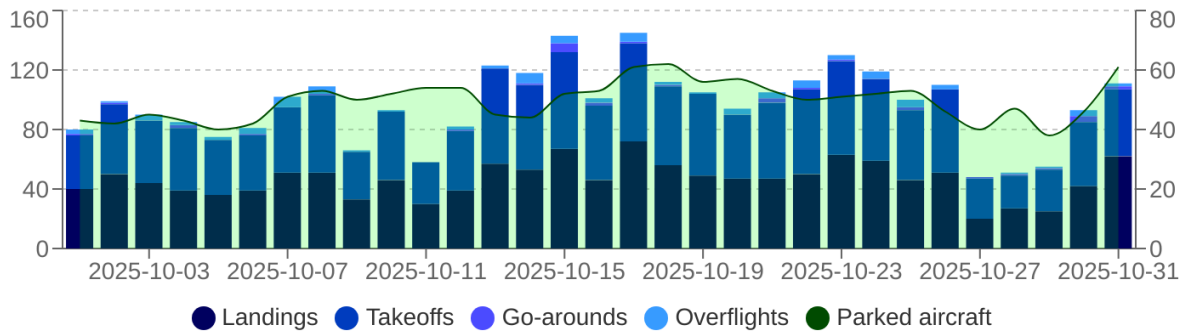
Rank	Date	Pavement ops	Aircraft
1	2024-11-17 (S)	204	67
2	2025-09-22 (M)	165	21
3	2024-09-25 (W)	162	19
4	2024-03-12 (T)	159	21
5	2024-09-17 (T)	153	33
6	2025-03-19 (W)	152	31
7	2024-08-29 (T)	150	25
8	2024-08-30 (F)	149	28
9	2024-02-15 (T)	148	37
10	2023-09-20 (W)	145	22

## Hilton Head Airport | Runway Operations Report

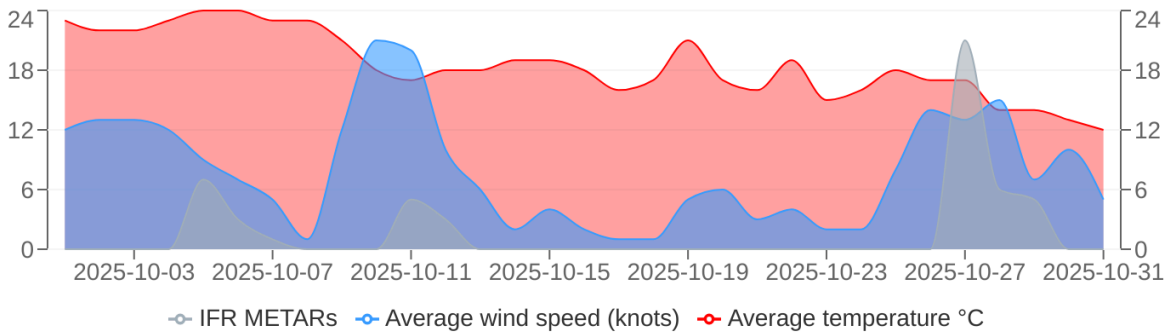
Report Date Range: 10/2025  
 Report creation date: 11/04/2025 10:38  
 Generated by: rrexrode@bcgov.net

Total Operations	Landings	Takeoffs	Go-Arounds	Overflights
<b>2,996</b>	<b>1,437</b>	<b>1,430</b>	<b>34</b>	<b>95</b>

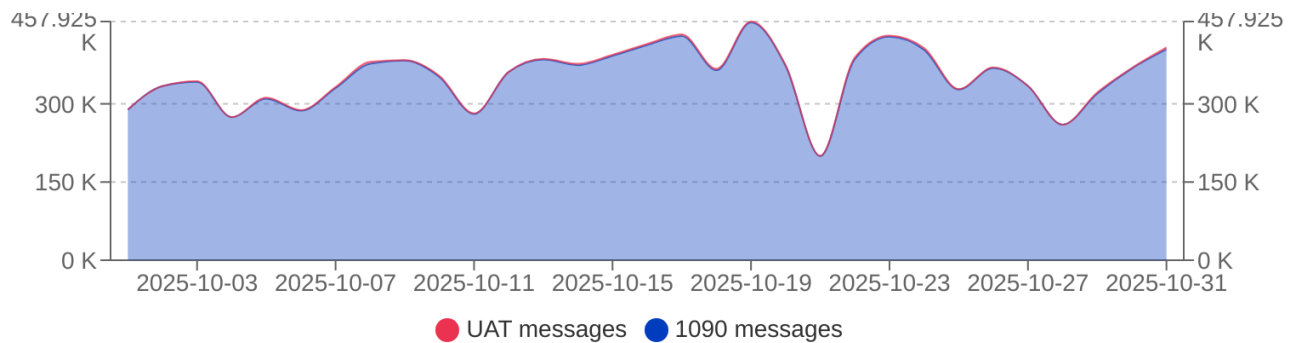
### Operations by Day



### Weather Conditions



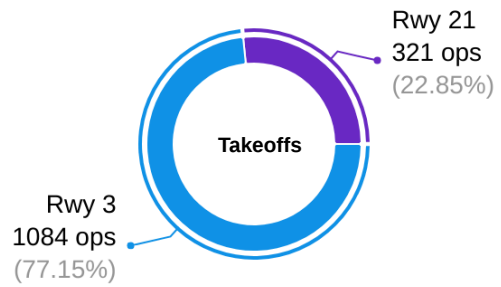
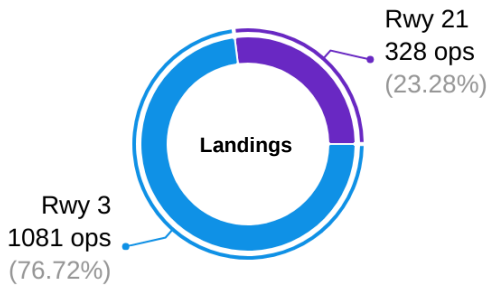
### Receiver health



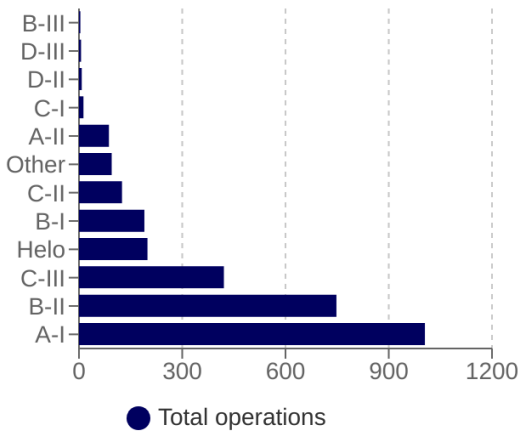
## Hilton Head Airport | Runway Operations Report

Report Date Range: 10/2025

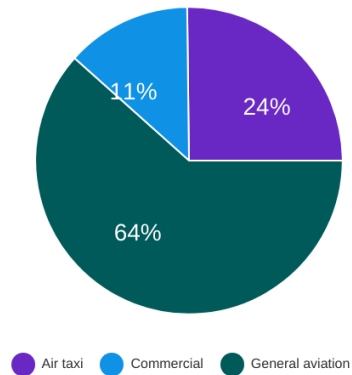
### Operations by Runway



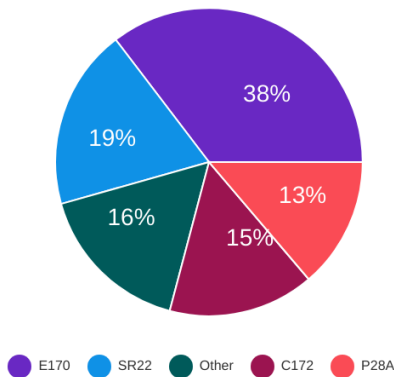
### Operations by Category



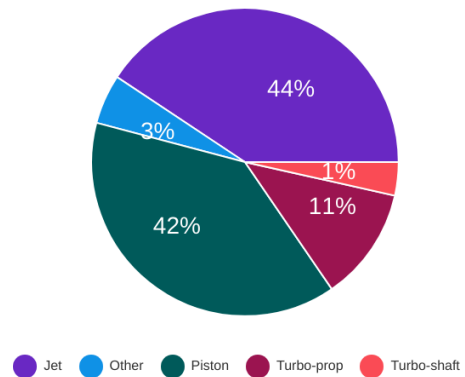
### Operations by Type



### Top Aircraft Types



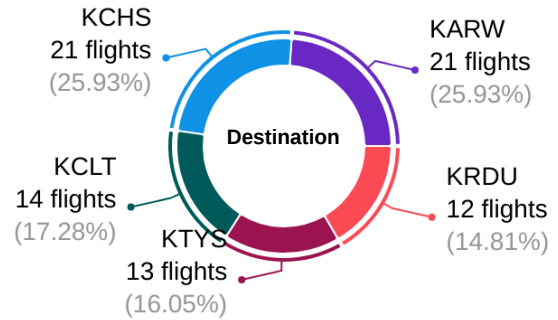
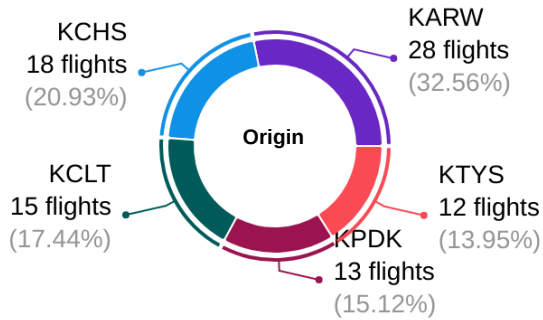
### Operations by Engine Type



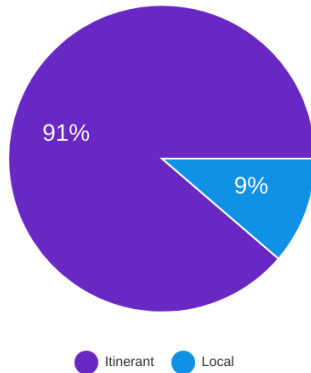
## Hilton Head Airport | Runway Operations Report

Report Date Range: 10/2025

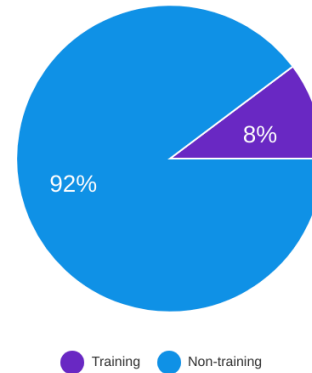
### Top Airports



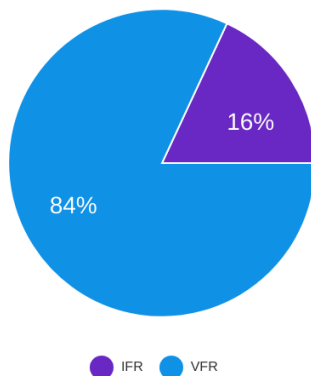
### Local vs Itinerant Flights



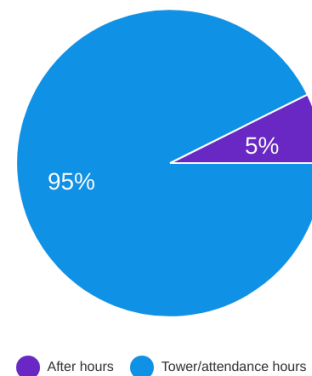
### Training Operations



### IFR vs VFR Flights



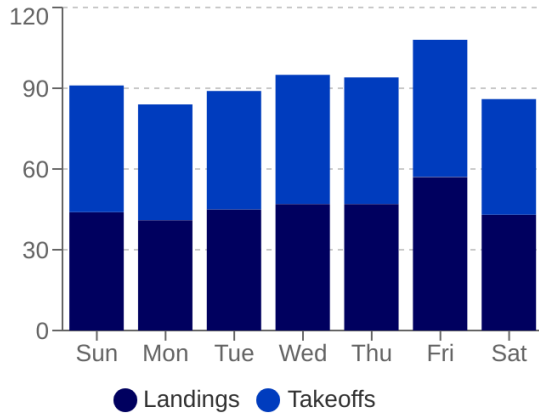
### After Hours Operations



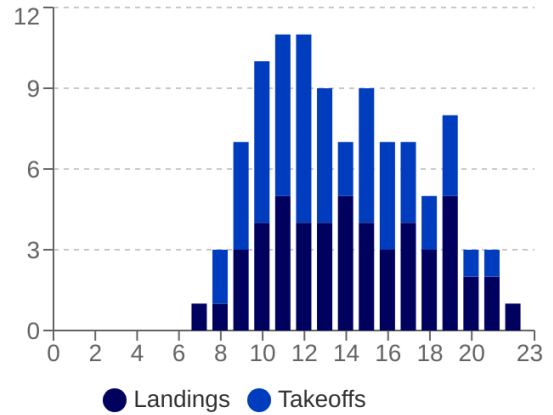
## Hilton Head Airport | Runway Operations Report

Report Date Range: 10/2025

### Operations by Day of Week

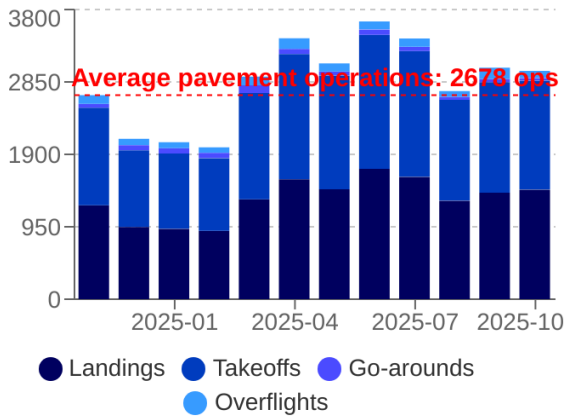


### Operations by Hour



## Historical Data

### Landings and Takeoff By Month



### Busiest Days on Record

Rank	Date	Pavement ops	Aircraft
1	2025-04-20 (S)	184	103
2	2025-04-17 (Tl)	178	96
3	2025-08-01 (Fi)	168	68
3	2025-06-29 (S)	168	86
4	2025-07-25 (Fi)	167	69
5	2025-04-16 (W)	165	92
6	2025-06-28 (S)	164	91
7	2025-04-21 (M)	157	90
8	2024-07-20 (S)	155	54
8	2025-07-03 (Tl)	155	63