



# HILTON HEAD ISLAND AIRPORT Phase 1 Terminal Improvements

June 30, 2025  
Stakeholder Update



**HILTON HEAD ISLAND**  
— AIRPORT —

[hiltonheadairport.com](http://hiltonheadairport.com)

# KEY WORK ITEMS ACCOMPLISHED

(June 1 – June 30)

---

- Roof installation, dried in, roof complete
- Interior wall framing 80%, mostly high ceiling
- Exterior Oyster shell finish 90% complete
- Sheetrock installation 85%, mud and sanding, high ceiling remains
- Interior water/HVAC/electrical/ Fire suppression final connection phase
- Final drive lanes prepped for paving
- Sidewalk bollards installed, prep for bike racks, flag poles
- TSA offices painted, bathrooms tile work 90%
- Exterior EFIS is complete
- Jet bridge foundations poured



# PROGRESS PHOTOS

## FRONT EXTERIOR VIEW





# PROGRESS PHOTOS

## EXTERIOR VIEW





# PROGRESS PHOTOS

## INTERIOR VIEW





# PROGRESS PHOTOS

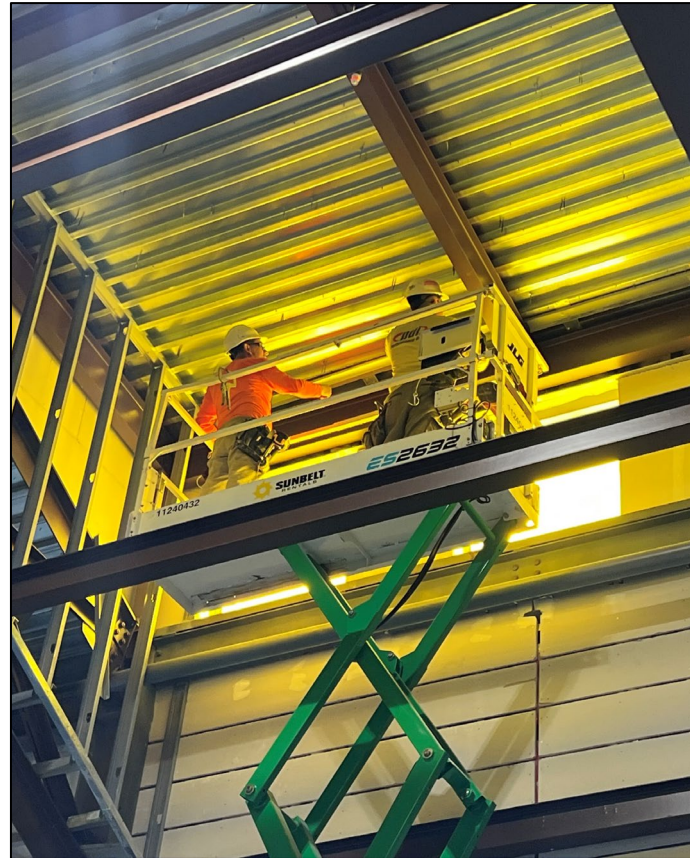
## EXTERIOR WORK





# PROGRESS PHOTOS

## INTERIOR WORK





# MILESTONE SCHEDULE

HHIA-016 - Hilton Head Island Airport Terminal Improvements 2025 May Update																																				
Activity ID	Area	Activity Name	Original Duration	Remaining Duration	Start	Finish	Free Float	Total Float	2024														2025													
									S	Oct	N	D	Jan	F	M	Apr	M	Jun	Jul	A	S	Oct	N	D	Jan	F	M	Apr	M	Jun	Jul	A	S			
Milestones			658	208	14-Sep-23 A	13-Apr-26	0	-31																												
Contract Milestones			943	28	14-Sep-23 A	13-Apr-26	0	-45																												
No Area			943	28	14-Sep-23 A	13-Apr-26	0	-45																												
CM1000		Owner Contract Execution	0	0	14-Sep-23 A				Owner Contract Execution																											
CM1010		Notice to Proceed	0	0	01-Feb-24 A				Notice to Proceed																											
CM1020		Substantial Completion	0	0		16-Mar-26	0	-45																												
CM1030		Final Completion	0	0		13-Apr-26	0	-45																												
Project Milestones			426	65	22-Jan-24 A	18-Sep-25	0	92																												
No Area			426	65	22-Jan-24 A	18-Sep-25	0	92																												
PM1000		New Temporary Airside Access Gate #1A Open	0	0		22-Jan-24 A			New Temporary Airside Access Gate #1A Open																											
PM1010		Existing Airside Gate #1 Closure	0	0	23-Jan-24 A				Existing Airside Gate #1 Closure																											
PM1020		Employee & Cell Phone Lot Closed	0	0	05-Feb-24 A				Employee & Cell Phone Lot Closed																											
PM1030		Existing Baggage Canopy/Entrance Closure	0	0	26-Feb-24 A				Existing Baggage Canopy/Entrance Closure																											
PM1040		Existing Baggage Canopy/Entrance Re-Open	0	0		08-Mar-24 A			Existing Baggage Canopy/Entrance Re-Open																											
PM1080		Existing Ticketing Canopy/Entrance Closure	0	0	11-Mar-24 A				Existing Ticketing Canopy/Entrance Closure																											
PM1050		Existing Main Ent. Canopy/Entrance Closure	0	0	21-Mar-24 A				Existing Main Ent. Canopy/Entrance Closure																											
PM1070		Existing Main Ent. Canopy/Entrance Re-Open	0	0		29-Mar-24 A			Existing Main Ent. Canopy/Entrance Re-Open																											
PM1090		Existing Ticketing Canopy/Entrance Re-Open	0	0		29-Mar-24 A			Existing Ticketing Canopy/Entrance Re-Open																											
PM1060		Public Parking Partial Closure	0	0	15-Jul-24 A				Public Parking Partial Closure																											
PM1110		Traffic Shift to Outside West/South Entrance Road Realignment	0	0		15-Jul-24 A			Traffic Shift to Outside West/South Entrance Road Realignment																											
PM1130		Traffic Shift to North Lanes Entrance Road Realignment	0	0		18-Nov-24 A			Traffic Shift to North Lanes Entrance Road Realignment																											
PM1120		East Airside Gate #32 Closure	0	0		13-Dec-24 A			East Airside Gate #32 Closure																											
PM1180		Dry In	0	0		22-Mar-25 A			Dry In																											
PM1140		Public Parking Re-Open	0	0		17-Jun-25	52	157	Public Parking Re-Open																											





# IMPORTANT COORDINATION ITEMS

- ❖ Continue re-routing passengers through construction zones
- ❖ Approve interior graphics, light fixtures and accessories
- ❖ Begin parking lot study and prep gate locations
- ❖ Paving, interior floor sample, painting and utility hook up and testing





- 
- PAVE 2 NEW ARRIVAL/DEPARTURE LANES
  - EXTERIOR SIDING
  - HIGH CEILING SHEET ROCK
  - INTERIOR WIRING AND UTILITY CONNECTION
  - JET BRIDGE ARRIVAL AND INSTALLATION

## NEAR-TERM LOOK-AHEAD



# Coming soon...

